



**UTEX INDUSTRIES, INC.**  
Taking Sealing Technology Beyond Tomorrow  
ISO 9001 Certified  
www.utexind.com

# PRODUCT BULLETIN

UPB - 90  
Rev A

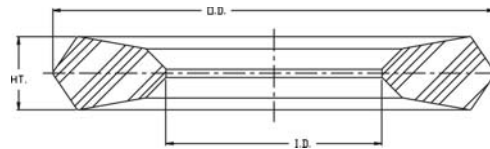
01/26/06  
02/09/07

## VALVE INSERTS FOR PLUNGER, MUD & WELL SERVICE PUMPS



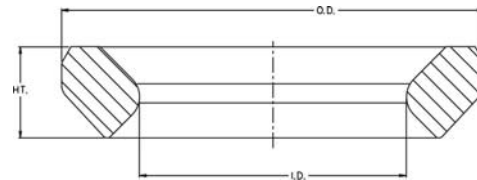
### SM STEM GUIDED FOR MUD PUMPS

- Available in Urethane and HNBR Elastomers
- Used in drilling fluids up to 230°F
- Operates in oil-based drilling fluids
- Superior abrasion resistance
- Suitable for 5,000 psi operation
- Snap-on insert



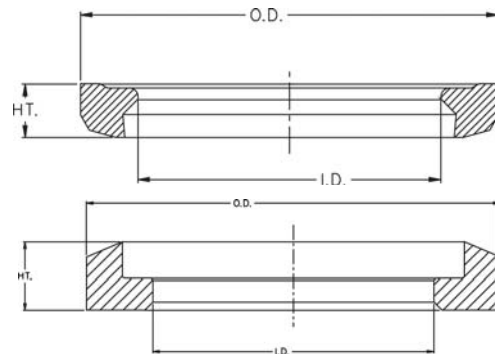
### RN FULL OPEN FOR MUD PUMPS

- Pressure ratings up to 7,500 psi
- Operates in drilling fluids up to 230°F
- Operates in oil based drilling fluids
- Full open flow characteristics
- Snap-on insert



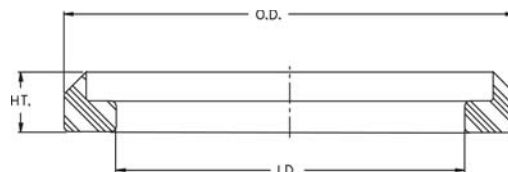
### RN & SM FOR FRAC VALVES

- Available in Urethane and HNBR Elastomers
- Operates in oil-based drilling fluids
- Fits all major well-service pumps
- Snap-on insert



### ABRASION RESISTANT FOR PLUNGER PUMPS

- Available in Urethane
- Used in positive displacement pumps
- Superior abrasion resistance
- Snap-on insert



**SM STEM GUIDED FOR MUD PUMPS**

SIZE	ID	OD	HEIGHT	MOLD #
API 5	2-1/2"	4-1/2"	53/64"	0393
API 6	3"	5-23/32"	61/64"	0531
API 7	3"	6-5/32"	1-1/64"	0369
API 8	3"	7-1/64"	1-13/64"	0383
API 9	3"	7-1/2"	1-9/32"	0384

**RN FULL OPEN FOR MUD PUMPS**

SIZE	ID	OD	HEIGHT	MOLD #
API 6	3.790"	5.840"	1.130"	0656
API 7	4.005"	6.400"	1.365"	0657
API 8	4.475"	6.870"	1.365"	0658

**RN FOR FRAC VALVES**

SIZE	ID	OD	HEIGHT	MOLD #
UF 2	2.175"	3.000"	.353"	0642
UF 3	2.863"	4.156"	.580"	-
UF 4	3.244"	4.440"	.565"	-
UF 4A	3.167"	4.102"	.460"	-
UF 4B	3.212"	4.113"	.455"	0651
UF 5	3.604"	4.938"	.585"	-
UF 6	4.031"	5.600"	.695"	-
UF 7	4.673"	6.430"	.795"	-

**SM FOR FRAC VALVES**

SIZE	ID	OD	HEIGHT	MOLD #
4	2.460"	3.815"	.660"	0633
4A	3.181"	4.445"	.678"	0654
5	3.550"	4.900"	.670"	0641
5A	3.060"	4.750"	.680"	-
6	4.015"	5.575"	.860"	0609
7	4.703"	6.461"	.860"	0611

**ABRASION RESISTANT FOR PLUNGER PUMPS**

SIZE	ID	OD	HEIGHT	MOLD #
UR 3	.863"	1.443"	.250"	0517
UR 5	1.068"	1.648"	.296"	0519
UR 6	1.250"	1.863"	.290"	0512
UR 7	1.589"	2.169"	.290"	0518
UR 8	1.710"	2.290"	.290"	0520
UR 9	1.812"	2.503"	.335"	0513
UR 10	2.530"	3.330"	.385"	0514